

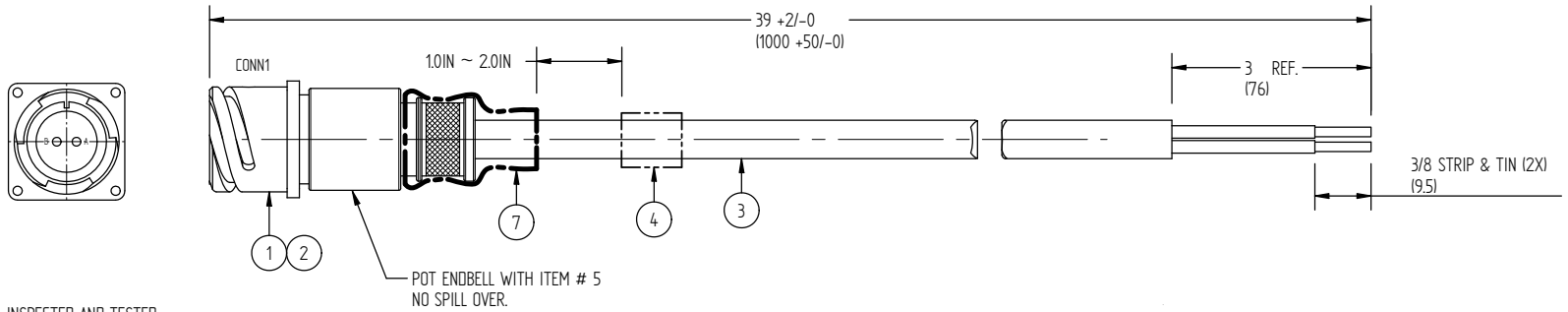
COMPANY NAME: _____
 PRINTED NAME: _____
 SIGNATURE: _____
 DATE: _____
 TEL. #: _____

THE PRODUCT DESCRIBED IN THIS DRAWING USES STANDARD MATERIALS AND DESIGN APPROACHES THAT ARE DESCRIBED IN THE PEI-GENESIS CABLE ASSEMBLY COOK BOOK AND/OR THE PEI-GENESIS CABLE ASSEMBLY WORK BOOK. THIS PRODUCT AS ASSEMBLED IS NOT SUBJECT TO EXPORT RESTRICTIONS ACCORDING TO THE ITAR GUIDELINES. USERS OF THIS PRODUCT WHO INCORPORATE IT INTO OTHER PRODUCTS ARE RESPONSIBLE FOR DETERMINATION OF THE APPLICABILITY OF EXPORT RESTRICTIONS TO THEIR COMPLETED PRODUCT.

EXISTING BILL OF MATERIAL ENTRIES ON QUANTITY OR SIZE OF HEATSHRINK TUBING, LABELS AND TAPES ARE SUBJECT TO UPDATES FOR MANUFACTURABILITY IMPROVEMENTS.

REVISIONS

REV	ZONE	ECO #	DESCRIPTION	DRAWN BY	APPD BY	DATE
A			RELEASE FOR EVT	AA	SW	04/30/07
B			POTTING NOTE ADDED IN DWG, ITEM 1 DESC CORRECTED	AA	SW	05/02/07
C			RELEASE FOR DVT	AA	SW	05/03/07
D			ITEM 1, P/N AIB030U18-3P0 ADDED ITEM 2, P/N 10-040561-000 ADDED ITEM 3, CHANGED FROM AUF-TC122 TO AUF-TC142	AA	SW	05/22/07
E		ECO# 0910-0001	CUSTOMER REQUEST: BACK POTTING MATERIAL REPLACED WAS HOTMELT, ADD ADHESIVE LINED HTSHRINK	JKHF	SDL	10/01/09



NOTES:

- PARTS MUST BE COMPLETELY ASSEMBLED, INSPECTED AND TESTED. REFER TO TABLE A FOR COMPLETE LIST OF MATERIALS.
- REFERENCES AND STANDARDS
ASME Y14.5M-1994
CONVERTING AND ROUND OFF 1 INCH = 25.4 MM APPLIES.
- FOR PRODUCT COMPLIANCE VERIFICATION, PART MUST MEET THE REQUIREMENTS AND ACCEPTANCE FOR CABLE AND WIRE HARNESSSES, IN ACCORDANCE WITH IPC/WHMA-A-620 AND PEI-GENESIS APPROVED ENGINEERING AND MANUFACTURING PROCESSES.
- LISTED PART NUMBER ARE FOR REFERENCE ONLY. FOR UPDATED PARTS LIST, REFER TO CURRENT BILL OF MATERIAL.
- REFER TO PEI-GENESIS WORKMANSHIP STANDARD, CAPI AND QUALITY GUIDELINES FOR MANUFACTURING STD. REQUIREMENTS.
- PACKAGING: PEI - GENESIS STANDARD PACKING.
- LABEL: WHT PRINT ON BLACK BACKGROUND. SEE LABEL FORMAT.

TABLE A

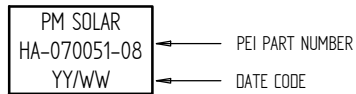
ITEM NO.	PART OR IDENTIFYING NO.	NOMENCLATURE OR DESCRIPTION	REQ'D QTY	UNIT
1	AIB030U18-3P0	EB 2C #12 PIN RECP WALL UNI	1	EA
	EB0U18-3P0			
2	10-040561-000	CAB CON 12 PIN 14/12 F80 A36	2	EA
	030-8588-000			
3	AUF-TC142	2C #14AWG ULTRAFLEX 600 V	41	IN
4	SM12-3/4-BLK	HEATSHRINK LABEL 3/4	1	IN
5	3125	EPOXY MEDIUM CURE	8	GM
6	93110	CABLE TIE	1	EA
7	LPA100-1000-BLK	HEAT SHRK 1" THIN WALL	3	IN

WIRE ASSIGNMENT

CONN1 PIN	CABLE / WIRE
A	#14 BLK
B	#14 RED

ELECTRICAL TEST TYPE: CONTINUITY, MISWIRE AND OPEN SHORT.
 MECHANICAL: PULL TEST (AS PER PEI APPROVED PULL TEST REQUIREMENTS)

LABEL FORMAT:



NOTE: CAD GENERATED DRAWING DO NOT UPDATE MANUALLY.

CAGE CODE 2A589

SIMILAR TO

SIZE A4 SCALE NTS SHEET 1 OF 1 VER E

©COPYRIGHT 2004 PEI-GENESIS
ENGINEERING PRODUCT DEVELOPMENT

TITLE		CBO CABLE PLUG PIG TAIL, PANEL MOUNT SOLAR - UNAVCO	
UNLESS OTHERWISE SPECIFIED, DIMENSIONS ARE IN INCHES TOLERANCE EXCEPT AS NOTED: ANGULAR ± ° DECIMAL .XX ± .XX DECIMAL X ± X DECIMAL .XXX ± .XXX		PART NUMBER	HA-070051-08
THIRD ANGLE PROJECTION		REV	E
MATERIAL		USED ON ASSY NO.	
FINISH		PROJ. NO.	070051
FILE		DRAWN	ALBERT AVENDAÑO
CC, CS ...		ENGINEER	
APPROVED BY		DATE	04/30/07
		DATE	04/30/07



NOTICE OF CONFIDENTIALITY
 THIS DRAWING IS THE PROPERTY OF PEI-Genesis, ALL RIGHTS RESERVED. REPRODUCTION BY ANY MEANS OR DISTRIBUTION TO THIRD PARTIES IS STRICTLY PROHIBITED WITHOUT THE WRITTEN PERMISSION OF AN AUTHORIZED AGENT OF PEI-GENESIS.